

GENERAL INFORMATION

Árido-Ciencia is a peer reviewed scientific journal that is published, edited and distributed every six months by the Jorge Arturo Alba Avila Herbarium (JAAAH) and researchers from the academic group under consolidation called "Richness, Interactions and Biodiversity Conservation" of the Lines of Knowledge Generation and Application (LKGA)"Biology, Vulnerability and Conservation of Flora, Fauna and Wild Microbiomes "of the Faculty of Biological Sciences at the Juárez University of Durango State. The journal covers topics concealed in ***Biosciences and Ethnodiversity***, therefore intermediate topics between both areas can be submitted for publication.

The manuscripts can be submitted in either Spanish or English. If translation to or from English is required, the journal has a Department of Foreign Language Communication (with TOEFL ITP, BRITISH COUNCIL, IELTS and INTERNATIONAL HOUSE certifications for English language) that can provide the translation service for a minimum recovery cost per page.

Árido-Ciencia considers that the content of the contributions is of full responsibility of the authors, so the journal, editorial group and the academic affiliations of the national and international editorial group are exempt from any liability in this regard.

TYPES OF PUBLICATIONS

Árido-Ciencia considers scientific articles, notes (Short communication), reviews (Reviews) and semblances (Semblances) for publication as long as these have not been submitted for publication in other editorial bodies and are not simultaneously submitted elsewhere.

Scientific article. -Those unpublished extensive works that fit between the two main topics of the journal: Biosciences and Ethnodiversity (Examples: Ecology, Taxonomy, Herpetology, Plant Ecology, Molecular Biology, Entomology, Biogeography, Ethnoscience and all others related to these subjects) are taken into consideration.

Short communication. - Are those studies of short observations, unusual findings or preliminary research of complex studies that allow for the contribution of new knowledge or hypotheses for future research.

Short note in ethnobiodiversity. - A note in ethnobiodiversity refers to all reports of ethnospecies, which is understood as the entity constituted by a biological species and its corresponding cultural (traditional) name. The note must describe the perception, knowledge or utilization of the ethnospecies, its socio-ecological relationship or the geographical region.

Reviews. - Topics of current interest for science based on gathering the most relevant information on specific topics. In comparison to research articles, reviews are general, selective and completely critical analyses integrating essential information into current topics carefully.

Semblances. - Biography of limited extension in which information about the work and human career of outstanding people in the scientific research field is presented to recognize such trajectory.

GENERAL PROCEDURES FOR THE PREPARATION OF CONTRIBUTIONS

Preparation of the text: Double-space in Word 97-2013 processor, font type Times New Roman with 12 points of size, margins of 2.5 cm, continuously numbered pages and lines at the left margin. The text must be written in the third person; numbers from zero to nine written with letters, except when preceded by some unit of measurement, and onwards from 10 with numbers. The units and abbreviations to be used are those accepted in the International Units System (<http://www.sc.ehu.es/sbweb/fisica/unidades/unidades/unidades.htm>).

Titles of the manuscript: A main title in Spanish and English must be included in capital letters, bold and centered, with a maximum of 15 words. A short secondary title that will be used as a ledge and should be written in the original language of the manuscript with upper and lower case letters, aligned to the left and with a maximum of seven words.

Authors and addresses: Complete names, starting with first name (s) followed by last name (s). The co-authors separated by comma and at the end of each it must include superscript numbers for identification. Each number will indicate the author's adscription. If there is an author for correspondence, indicate it with an asterisk and at the end of the adscriptions add the legend "Author for correspondence: indicating the contact email".

Summary: In the language opposite to the body of the manuscript, include five keywords in both languages respectively. Keywords should not be contained in the main title.

Margins: 2.5 cm wide in all four sides.

Tables and Figures: Include these immediately after the cited literature in the order of appearance throughout the text. They must be respectively numbered in Arabic, fully readable, direct, clear and with bold font. The caption in the case of the tables is placed above while in the case of the figures, photos or diagrams is placed below. These must be sent in separate pages at the end of the text (See annex I).

MATERIALS AND METHODS

Experimental design: A detailed description of the experimental design begins in this section.

Main and secondary titles within the manuscript body: The main titles are used for the separation of sections contained within the manuscript and these are aligned to the left, in bold font and capital letters without full stop mark. Its corresponding description begins in the next line. Secondary titles account for each section and are aligned to the left side in bold italics using both uppercase and lowercase, full stop mark, and followed by the corresponding wording.

Literature cited within the text: At first indicate the surname of the first author followed by that of the second author or 'et al.' followed by the year of publication as shown below: (Márquez, 1992), (Muro & Leyva, 1993), (Sánchez et al., 1994; Muro & Leyva, 1993). If there were more than two authors adjust as follows: Estrada-Castillón, E, Villarreal-Quintanilla, A.J. & E., Jurado, 2011.

DETERMINED FORMATS FOR CONTRIBUTIONS

SCIENTIFIC ARTICLES AND REVISIONS (Reviews)

SCIENTIFIC ARTICLE

Layout. - The order is defined as follows: short title, main title in Spanish and English, author (s), abstract and keywords in Spanish and English, introduction, methodology, results, discussion, conclusions, acknowledgments (optional) and cited literature.

Abstract. - An extension of no more than 250 words including research question, justification, methodology, relevant results and conclusion. All of the above in a single paragraph without citations.

Keywords. - A maximum of five keywords not included in the title. They must be sorted alphabetically and separated by semicolons. If necessary, include compound keywords (Ex: Thermal Ecology, Applied Botany).

Abstract and keywords (in English). - It must contain exactly the content of the abstract and keywords that are in Spanish. The authors are fully responsible for the English translation.

Introduction. - Emphasize precisely on the importance, justification, background and objective (s) of the investigation. Add the related bibliography from the last five years. In case that there is a poorly developed topic, the inclusion of classic bibliographies on the subject from more than five years can be considered. If possible, omit the use of thesis information (undergraduate, master's and doctorate); however, if necessary, only a maximum of two citations of this type will be accepted, preferably of the maximum degree.

Materials and Methods. - If you have done fieldwork, provide a description of the study area, it may include a map. It is important to detail the materials used, specifying where, when and how the methodological process of the study or experiment was performed. Emphasize on the experimental design, evaluated variables and statistical analysis applied. If databases or other relevant information is considered, mention it. In addition, if the investigation included the collection, capture or manipulation of any organism, attach the pertinent information regarding collection permit to carry out such activity and add data about the placement of biological material in scientific collections.

Results. - These should be direct, highlighting important aspects only related to the research. They must be presented in an objective way using tables, images, figures and / or graphics (see ANNEX I TABLES, IMAGES AND GRAPHICS) avoiding their unnecessary. Graphics referring to a statistical result must be displayed in black and white or gray scale when required.

Discussion. - In this section the interpretation of the results from other authors will be performed, which will be compared to those obtained in the research itself. This could substantiate the authenticity of the investigation by presenting a logical argument based strictly on related works and the stated hypothesis in case it was this way.

Conclusions. - It should be taken into account that this is where the novel scientific contributions are presented, which are conceived as a direct logical deduction of the developed research; therefore, these must be congruent, direct, logical, strictly limited to the research and without similar connotation to results.

Acknowledgments. - These should be brief and emphasizing primarily the institution (s) that provided support for the development of the research, as well it should include project or support number and the period if applicable whenever possible. Also, include the name of the group that supported its development if required.

Literature Cited. - It must contain a complete list of all the information used and presented in alphabetical order. This section also considers online or printed sources. For ease of use it is recommended use the following free license manager (http://www.cva.itesm.mx/biblioteca/pagina_con_formato_version_oct/apa.htm) to generate literatures in APA format from: books, magazines, newspaper, encyclopedias, web pages and journals.

SHORT COMMUNICATION

As a note, all the information that the Internal Editorial Committee and the referees consider should be published under this modality. This modality will include preliminary results, records of new locations for species with ecological or other type of importance, records of new species and new methodologies proposed for the field of science. The note must include a title of no more than 15 words (Spanish and English), abstract of maximum 150 words, five keywords (abstract and key words in Spanish and English), introduction, and advance of the topic with sub-topics defined by the authors, results, discussion, acknowledgments and cited literature. The note must not exceed 15 pages.

SHORT NOTE IN ETHNODIVERSITY

A note in ethnodiversity considers all that record of ethnospecies, which is therefore the entity constituted by a biological species and its corresponding cultural (traditional name). The note must describe the perception, knowledge or use of such ethnospecies, its socio-ecological relationship or geographical region. This note is composed of relevant ethnobiological information, but insufficient to comprise a short note. This modality should focus on ethnobiological observations, provide new information that has not been previously reported and mentioned for a certain ethnospecies. It should be structured as follows: a) Title: must include the scientific name of the species and its traditional name. Author / s: based on the general specifications of Árido-Ciencia. Keywords: three words not included in the title. Introduction: Summarized. Material and Methods: Brief description of how the information was obtained in addition to the recording site, describe the place only with concise data (locality, municipality, state, country) and georeference. Results and Discussion: brief and concise, it is essential that bibliographic citations that support the discussion are included. Conclusions: not applicable. Literature cited: Minimum 3 and Maximum 5 citations, follow the general specifications of formatting. The extension of the ethnobiodiversity notes have a maximum length of one page, the note can be complemented with a photograph of the described ethnospecies.

REVIEWS

The editorial committee will determine if a manuscript meets the criteria to be considered as such. This modality should include title (Spanish and English) of no more than 15 words, abstract, keywords (in both Spanish and English) and introduction. The rest of the sections that will shape the review may vary; however, it is necessary to add a section on the development of the topic, sub-themes if necessary and which will be defined by the authors. A section of conclusions and cited literature should be added at the end.

SEMBLANCE

The internal editorial committee will determine if a document meets the requirements to be considered as such. This can refer to one or several people and are considered important regarding issues that contribute to the scientific labor, written in a formatting as memories, anecdotes and life stories about the person (s) to whom this is dedicated. Historical, posthumous or relevant professional achievements can also be published. Maximum extension of two letter-size pages using double-spaces. A half-length image of the person with a minimum resolution of 350dpi (equivalent to 8.5 inches) will be accepted in the center of the document.

LITERATURE CITED SECTION

The cited literature will be listed at the end of the contribution in alphabetical order. It is recommended to use the following free license manager (http://www.cva.itesm.mx/biblioteca/pagina_con_formato_version_oct/apa.htm) or Mendeley® (literature manager software) to generate citations in APA format from: books, magazines, newspaper, encyclopedias, web pages and journals (Fig. 1). The purpose of using Mendeley® is to ensure that references are properly organized content and related to the text. In the case of thesis, maximum of three citations will be accepted, considering that these are unpublished documents.

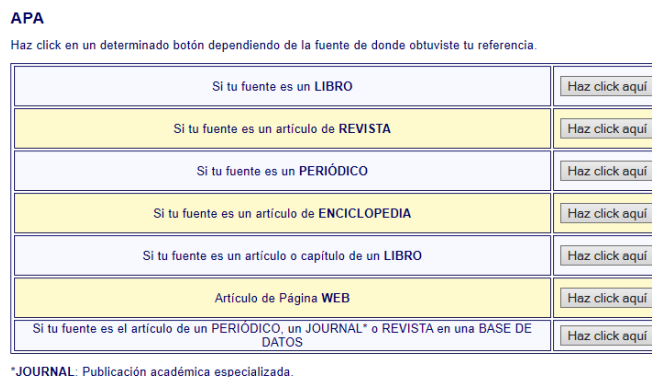


Figure 1. Web portal display to generate cited literature in APA format.

Examples for other citations:

Thesis (when necessary):

Blanco Contreras, E. 1989. Inventario Florístico del Cerro de San Ignacio, Municipio de Gómez Palacio, Dgo. Tesis. Universidad Juárez del Estado de Durango, México. 47 pp.

Multi-volume works:

Britton, N.L. y Rose, J.N. 1963^a The Cactaceae: Descriptions and Illustrations of Plantas of the Cactus Family. Vol. I. 2^a ed. Dover. Nueva York, EEUU. 236. pp.

Llorente-Bousquets, J. y Ocegueda, S. 2008. Estado del conocimiento de la biota. En Capital Natural de México. Vol. I: Conocimiento Actual de la Biodiversidad. CONABIO. México pp. 288-322.

Statistical packages or Software:

Kovach Computing Service. 1988. Multivariate Statistical Package. Anglesey, Wales, RU.

Thematic Letters from National Institute of Statistics, Geography and Informatics (INEGI):

INEGI. 2005. Carta de Uso Actual del Suelo y Vegetación. Serie III. Instituto Nacional de Estadística, Geografía e Informática México. (Cons. 10/03/2013). http://app1.semarnat.gob.mx/dgeia/informe_resumen/02_vegetacion/cap2.html

Observation: it is suggested to cite articles current with the previous five years of publication (Example: in introduction, methodology and discussion).

DOCUMENTS TO BE SENT FOR SUBMISSION OF A MANUSCRIPT

1.- Letter addressed to the Editor in which the reasons for evaluation are exposed for possible manuscript publication, indicating that it is an original work that has not been submitted for publication in another journal nor is being submitted simultaneously to another journal; as well, it should be mentioned that there is no conflict of interest between authors.

2.- Brief curriculum outline of main author and co-authors indicating academic degrees, institution where these were attained, current institutional affiliation. Prepare this item in the same language that the manuscript contains. Only the correspondence author should have a full postal address. Clearly indicate telephone and email for contact. The length of the outlines must be a maximum of one page.

3.- List of three possible reviewers indicating their institutional affiliation, telephone and email. Yet, the editor and editorial body will consider this proposal and send the document to those specialists considered for evaluation. In addition, include a list of possible reviewers with whom there may be a conflict of interest to avoid considering them in the possible review.

4.- Word file of the manuscript body with characteristics specified in the editorial standards.

5.- The figures must be included at the end of the text and sent with a minimum resolution of 350 dpi.

6.- The complete material must include the manuscript, tables, and / or figures as well as the respective caption of figures and / or tables. In the case of tables and figures send them in the same

document, but at the end of the text. The caption should be placed above for tables while in figures, photos or diagrams underneath. They will be sent on separate sheets at the end of the text.

7.- Letter of rights assignment in which the title of the contribution, author and co-authors will be indicated as well as an emphasis in the assignment of copyright to the magazine Árido-Ciencia: Biosciences and Ethnodiversity. This document must include the Full Name and Signature of the Author. The assignment of rights takes effect once the publication of the manuscript is accepted in the journal, otherwise its legal effect will be eliminated.

8.- Send the documents to the official e-mail of the magazine: arido-ciencia@ujed.mx, since contributions will only be received through this means.

EVALUATION TIMES

1.- Arbitration. If the manuscript meets the editorial standards, time for the process will be approximately one month or less and will be notified by official communication (letter) issued by the editor. Contrariwise, if it is not accepted, it is also notified and the procedure is concluded.

2.- Corrections of the manuscript. Once the contribution for publication has been accepted, the authors have 14 calendar days to make the adjustments proposed by the reviewers and possible observations made by the Internal Editorial Committee.

3.- Final verdict. After making the corrections by the author and co-authors, the first galley proof is sent to the corresponding author so that, in the next 15 calendar days the respective modifications or adjustments requested are made. The authors will have seven calendar days for calling in and return the reviewed document to the Internal Editorial Committee. If no comments are received on the galley proof, the Internal Editorial Committee will notify the acceptance of the contribution for publication by official letter as a definitive article in an immediate issue close to release.

COPYRIGHT

Once the contribution has been accepted for publication in Árido-Ciencia, the authors accept the following agreements:

- a) The authors assign the rights to the journal to be the first agency to publish and distribute the publication.
- b) The authors hold the copyright by being able to distribute, exchange, as well as share the contribution of Árido-Ciencia electronically under the terms that are best suited for the authors.
- c) Total content of the journal cannot be reproduced totally or partially under the term “no official copies”, since it only can be reproduced totally or partially if the documents are acquired from the official webpage www.aridociencia.mx.

PLAGIARISM AND FRAUD DETECTION

In order to maintain the authenticity of the journal and the originality of the published intellectual material, the editorial board considers the pertinent procedures to ensure originality of the submitted intellectual material and avoid plagiarism or intellectual fraud, so in order to carry out this process following evaluation software is taken into consideration:

<http://copionic.citilab.eu/>

<http://www.ithenticate.com/>

GENERAL CONSIDERATIONS ON THE INTERNATIONAL MEASUREMENT SYSTEM

It is recommended to use those units established by the Legal Units of Measure in the process of the investigation, considering the units described in the following tables. Consult the following URL for those units not taken into consideration,

<http://www.sc.ehu.es/sbweb/fisica/unidades/unidades/unidades.htm>:

Basic units		
Magnitude	Name	Symbol
Length	Meters	M
Mass	Kilograms	Kg
Time	Second	S
Alternating current	Ampere	A
Thermodynamic temperature	Kelvin	K
Amount of substance	mol	Mol
Light intensity	Candle	Cd

Derived units IS dimension			
Magnitude	Name	Symbol	Expression in basic units IS
Flat angle	radian	rad	$\text{mm}^{-1} = 1$
Solid angle	steradian	sr	$\text{m}^2\text{m}^{-2} = 1$

Derived IS units expressed from basic and supplementary units		
Magnitude	Name	Symbol
Surface	square meter	m^2
Volume	square cubic	m^3
Speed	meter per second	m/s
Acceleration	meter per second square	m/s^2
Number of waves	meter to output minus one	m^{-1}
Mass by volume	kilogram per cubic meter	kg/m^3
Velocity angle	radian per second	rad/s
Angle acceleration	radian per second square	rad/s^2

FORMATTING FOR TABLES, GRAPHICS AND IMAGES

Tables. They are included at the end of the text in the order they are presented throughout the manuscript and are listed consecutively. They must be sent in an editable format (Word or Excel). It is recommended not to over use them, so their use is only justified when the intention is to summarize some result or comparison of information. The titles of the tables are included at the top and it is recommended that the title and table are inserted within two lines of a 1X2 table. This option is found in the **INSERT** menu of the **Table** submenu (Figure 2) in text processors (Word). Once this table is shown, it will appear as two lines, the title (upper line) and the table (lower line). The format that will be accepted for the tables is **CLEAR SHADING** and is found in the **TABLE TOOLS** menu of the **Design** submenu. The text of the title must be in accordance to the general format of the contribution.

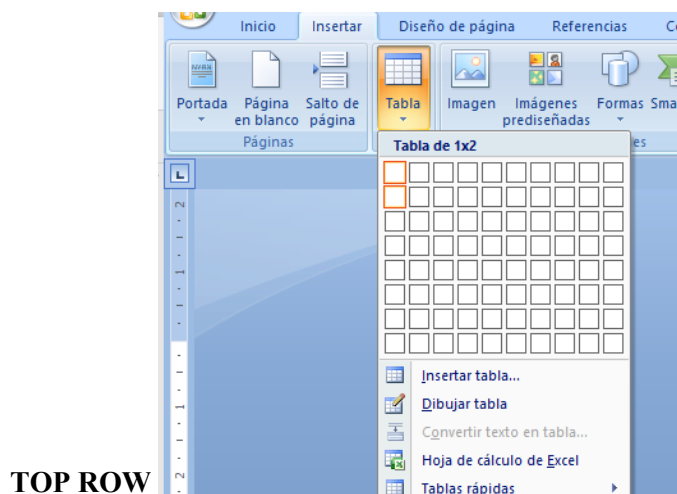
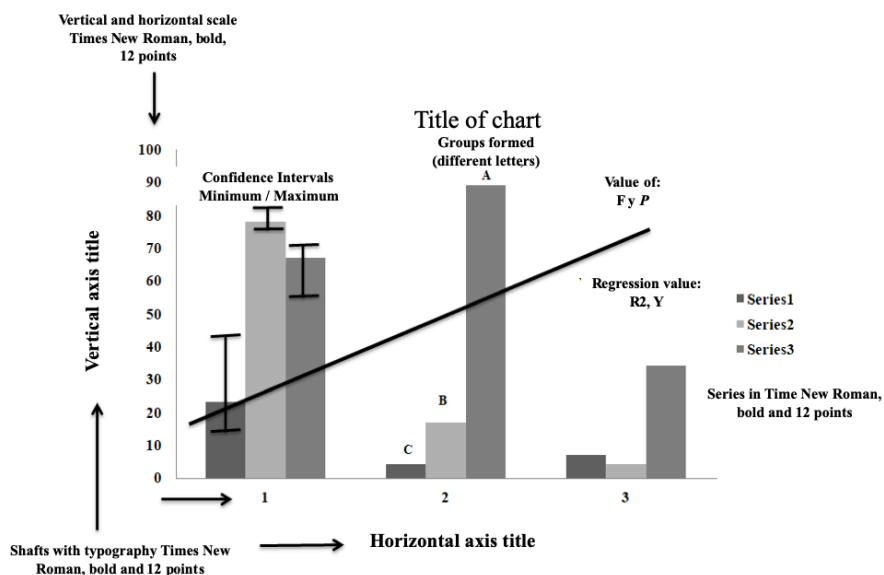


Figure 2. Example of how to insert a 1 X 2 table.
(BOTTOM ROW)

Graphics. The visual representation of the data by means of graphs is considered to detect patterns, trends and relationships. These can be columnar, pyramidal, linear, circular, bars, areas, dispersion, rings, bubbles and even the mathematical functions themselves. It is imperative that the graphics, whether bi or three-dimensional, contain the following basic elements: graphic title, without dividing lines, vertical axis title, horizontal axis title, legend (s). The typography for graphics will be the one used for the writing, in bold font, size of 10 points and the first letter in capitals. If the graphical representations are results from statistical analyses, consider the following items according to each case: **Means, standard errors and deviations**, which should be shown with their associated sample sizes as follows: “Mean \pm Standard Error = 24.0 \pm 3.1 ml, N = 62”. **For Significance tests**, provide names, test statistics and their value, freedom degrees or sample size and the value of P, all separated by commas “Mann-Whitney U test, U = 43, N1 = 4, N2 = 17, P = 0.05”. **Tests where freedom degrees** are presented as ANOVA should display values of F = 5.72 and P = 0.01. In case of handling confidence intervals and different groups within the graph, it is necessary to define these by means of different letters, as well as to add the values of F and P (level of significance) within the area of the graphs (Fig. 3). The graphics should be sent in an editable format (Excel or similar) and inserted within two lines of a 1X2 table as in the case of the tables. The graphics will be accepted only in gray scale in order to have uniformity and formality. The size of the graph should fit a rectangular area of 12 X 19 cm. The typography of the graphic will be Times New Roman; main title must centered at 18 points, vertical and horizontal axis titles as well as the series at 12 points and in bold fonts. The scales of vertical and horizontal axis must be in bold fonts and 12 points. The area of the graphics must not include dividing lines and according to the type of graph, respective values must display within the same area.



Graph 1. Basic elements of a typical graph. The type may vary according to the analysis performed as well as the values and essential elements.

Images. Both photographs, figures or drawings of schemes that represent direct information of the contribution and that are considered novel in the scientific field are accepted. They need to be clear, clear in explanation, of good quality and complete without maximizing or minimizing them to avoid deformation. These must be presented in the text of the body in a 1X2 table (Fig. 2) by means of the **INSERT** menu of the **Table** submenu (Figure 2.) Once this table is shown that appears as two lines, we proceed to place title (line lower) and figure (upper line). The images are accepted in PNG or JPG format at a minimum resolution of 350 dpi, with a minimum size of 530 x 1300 pixels and centered on the top line. Equations are also considered here if necessary, however they should be written using MathType (not images). The text of the title is respective to the general format of the contribution. Graphics converted to images will not be accepted because these prevent editing process. The images must be sent within the document below to where these are mentioned. When these are microscopy or stereoscopic images it is recommended to send them in grayscale, as well as to include technical data of the photograph such as scale, magnification at which it was taken and detail marks (Fig. 4).

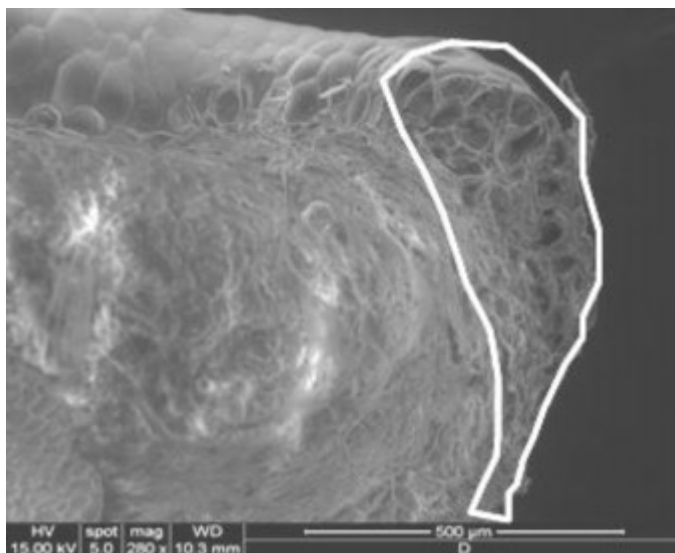


Image 1. Example of the details to consider for images such as scale (lower part), technical characteristics (lower part) and details to be highlighted (white line, right part).